



GMT MONTHLY MEMBERSHIP PROGRESS REPORT

Results as of: 4/30/2017

Multiple District 35

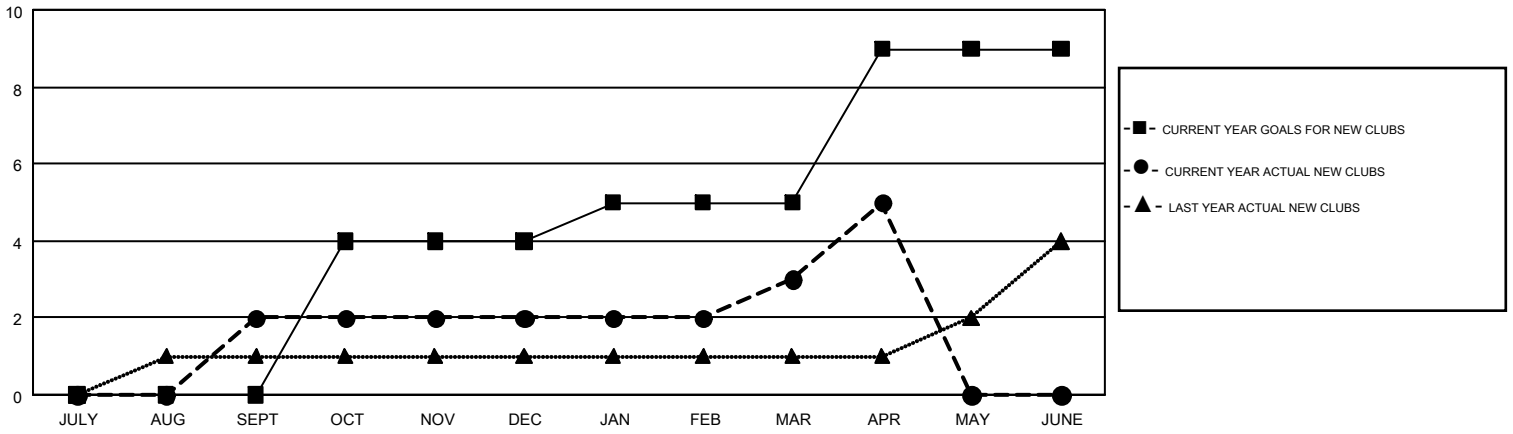
LOCATION: FLORIDA

GMT: HARVEY WHITLEY

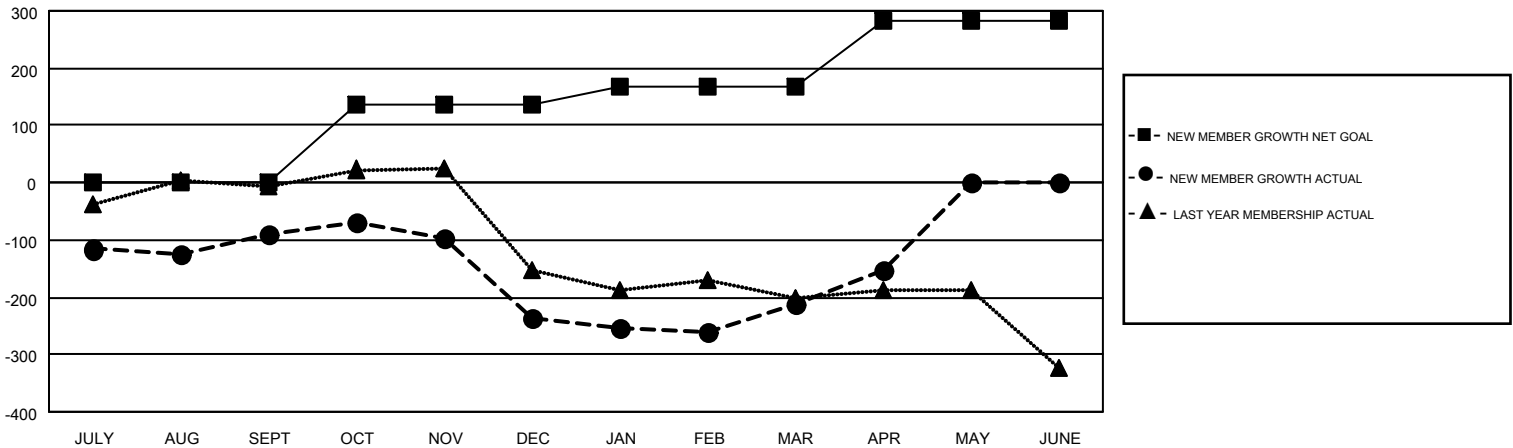
GMT CA 1

Clubs				Members			
RESULTS FOR 2016-2017				RESULTS FOR 2016-2017			
QUARTER	NEW CLUB GOAL	NEW CLUBS	DROPPED CLUBS	QUARTER	NEW MEMBER GROWTH NET GOAL (not reinstated or transfers)	NEW MEMBER GROWTH ACTUAL (not reinstated or transfers)	DROPPED MEMBERS ACTUAL (including transfers)
JULY/AUG/SEPT	0	2	4	JULY/AUG/SEPT	1	243	333
OCT/NOV/DEC	4	0	6	OCT/NOV/DEC	135	145	290
JAN/FEB/MAR	1	1	1	JAN/FEB/MAR	31	223	200
APR/MAY/JUNE	4	2	0	APR/MAY/JUNE	115	116	57

GOALS AND ACTUAL NEW CLUBS CUMULATIVE



GOALS AND ACTUAL MEMBERS CUMULATIVE



DROPPED CLUBS: 11	158 CLUBS OF 238 ADDED 1 OR MORE NEW MEMBERS	<u>GENDER DISTRIBUTION</u>	
<u>DROPPED MEMBERS</u>		MALE	3,151 (56.84%)
DECEASED	60	FEMALE	2,393 (43.16%)
CLUB CANCELLED	58	TOTAL FAMILY UNIT MEMBERS 1,334	
OTHER	762	FAMILY MEMBERS PAYING HALF DUES 687	
TOTAL	880		

[CLICK HERE FOR CUMULATIVE MEMBERSHIP DATA](#)